

# CERTIFICATE OF LOCATION OF GOVERNMENT CORNER

County of Anoka

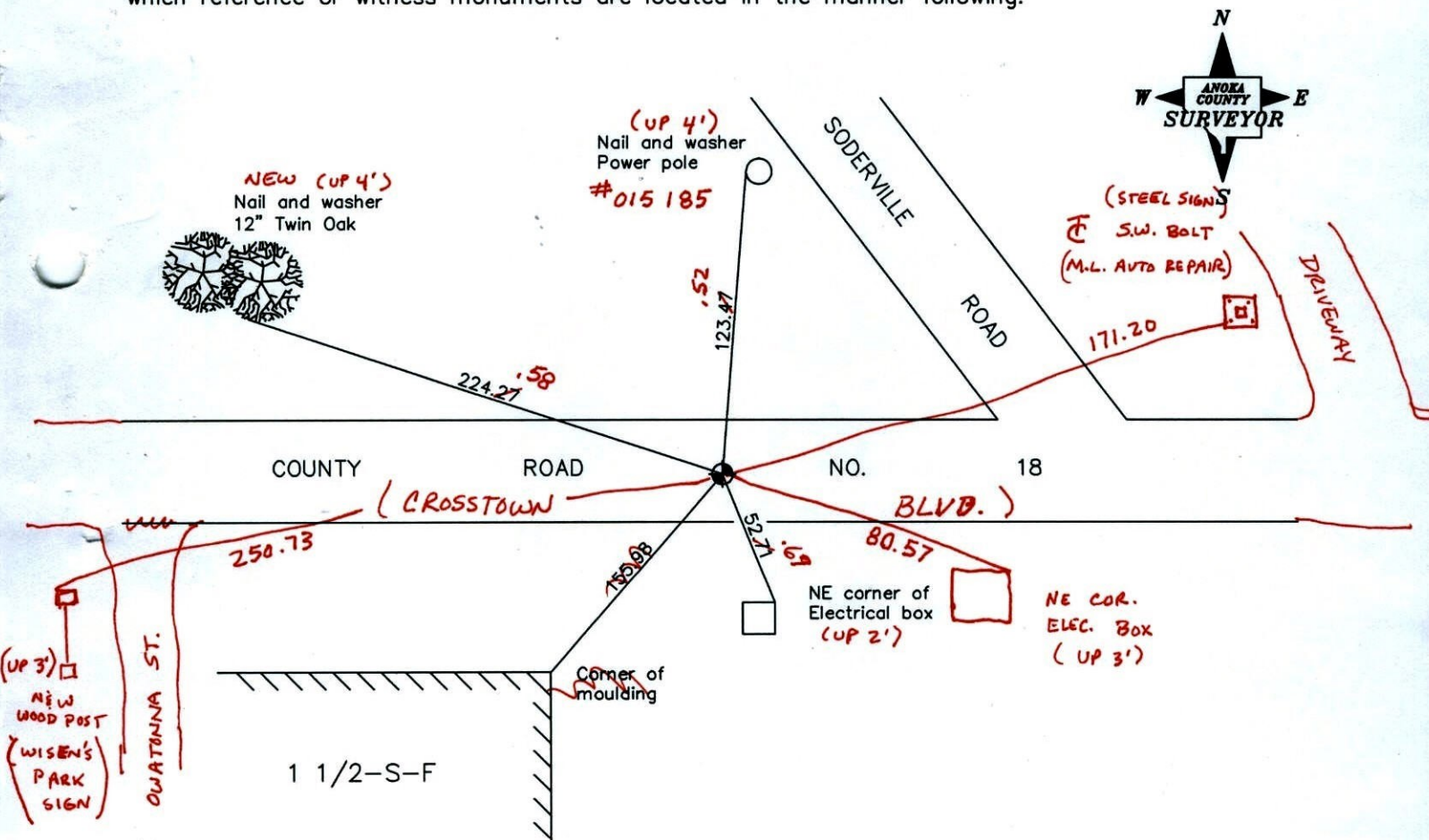
State of Minnesota

North 1/4 Corner of Sec. 9 Township 32 Range 23

I hereby certify that on the 13th day of July, 1964, I found the described corner which was evidenced by a cast iron monument set by N. C. Hoium

and I further certify that to perpetuate the location of said corner, I did, at the exact location thereof, place a permanent marker consisting of a cast iron monument ✓

which reference or witness monuments are located in the manner following:



BK-55  
T/T  
Revised date

|          |
|----------|
| 12/28/94 |
| 8/01/96  |
| 9/19/97  |
| 4-8-11   |

N.A.D. 1983 Coordinates  
(1996 adjustment)

| County Project Coordinates  | State Plane Coordinates |
|-----------------------------|-------------------------|
| Northing <u>190795.7703</u> | Y _____                 |
| Easting <u>513447.2954</u>  | X _____                 |

Date 9/19/97



# CERTIFICATE OF LOCATION OF GOVERNMENT CORNER

County of Anoka

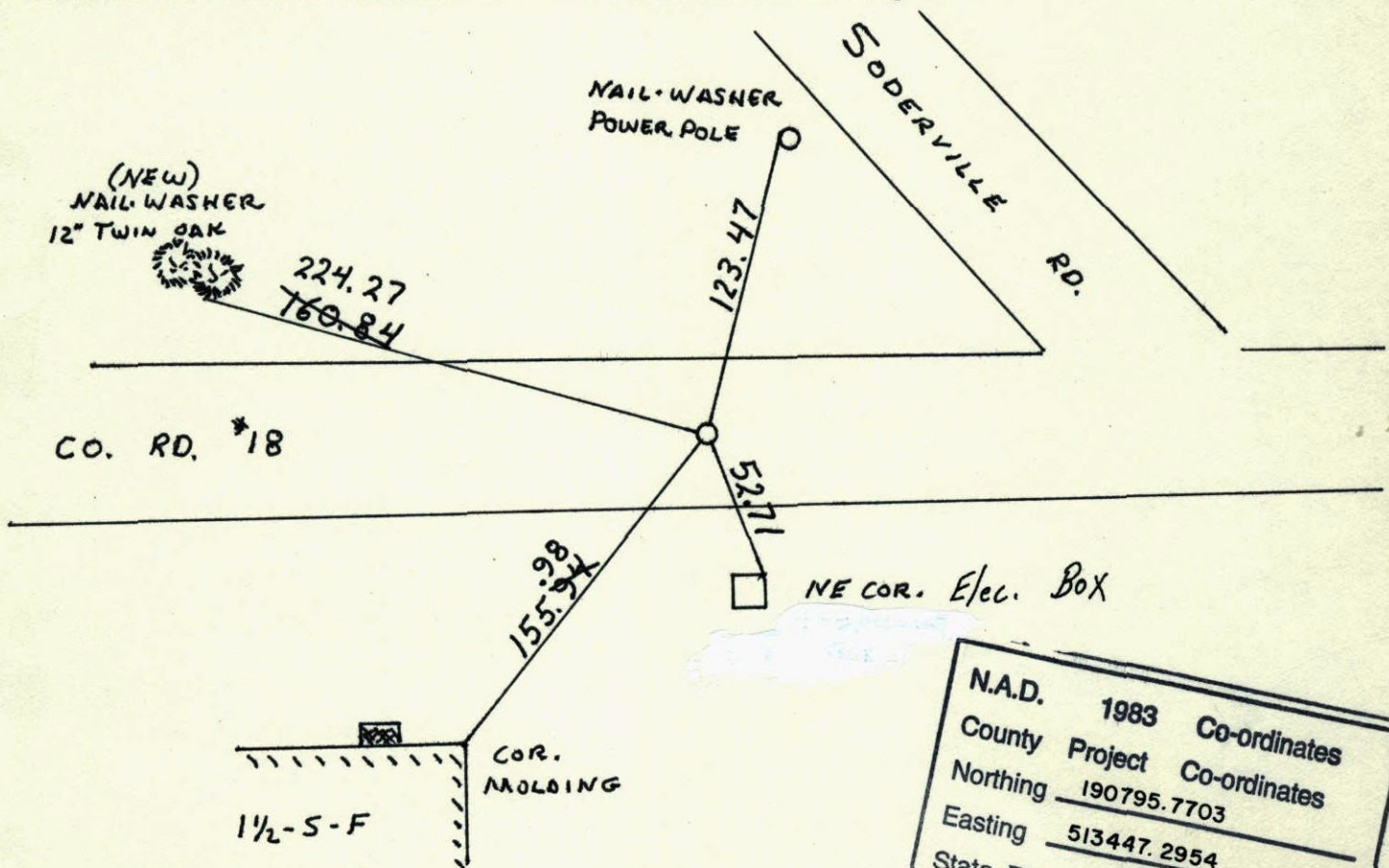
State of Minnesota

NORTH 1/4 Corner of Sec. 9 Township 32 Range 23

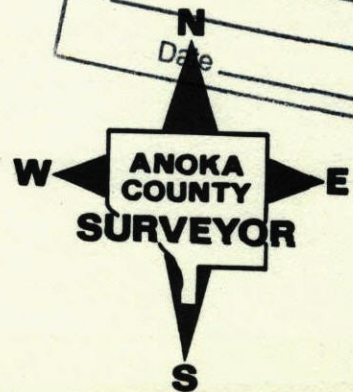
I hereby certify that on the 13<sup>th</sup> day of JULY, 1964, I found the described corner which was evidenced by CAST IRON MONUMENT SET BY N.C. HOIUM.

and I further certify that to perpetuate the location of said corner, I did, at the exact location thereof, place a permanent marker consisting of CAST IRON MONUMENT

which reference or witness monuments are located in the manner following:



|                          |         |                    |
|--------------------------|---------|--------------------|
| N.A.D.                   | 1983    | Co-ordinates       |
| County                   | Project | Co-ordinates       |
| Northing                 |         | <u>190795.7703</u> |
| Easting                  |         | <u>513447.2954</u> |
| State Plane Co-ordinates |         |                    |
| Y                        | _____   |                    |
| X                        | _____   |                    |
| Date                     | _____   |                    |



| Revised date               | Revised date | Revised date |
|----------------------------|--------------|--------------|
| <u>12-28-94</u> HL         |              |              |
| <u>8-1-96</u>              |              |              |
| <u>9-19-97</u> REPLACED HL |              |              |
|                            |              |              |
|                            |              |              |
|                            |              |              |

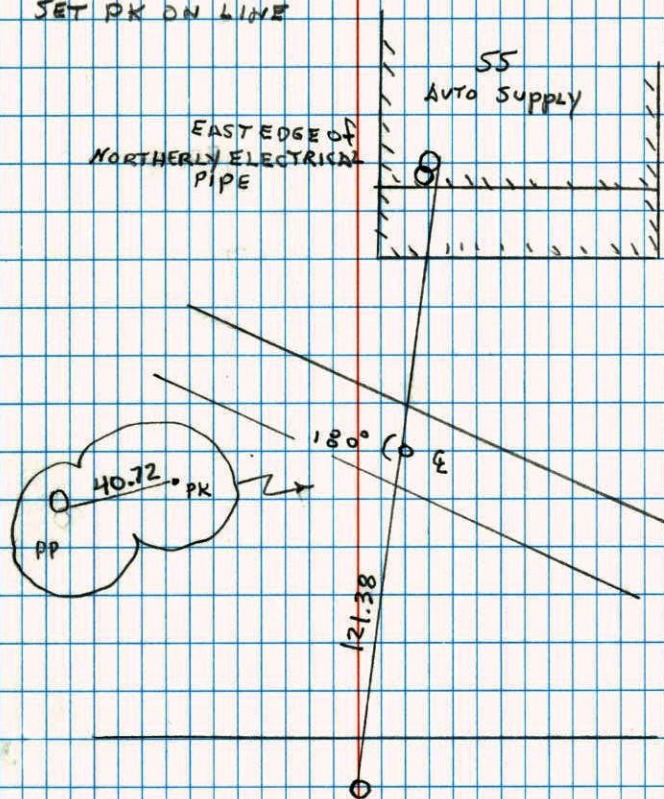


## CONSTRUCTION TIES

N<sup>1</sup>/<sub>4</sub> COR. SEC. 9 T32 R23

TRANSIT TIED

SET PK ON LINE



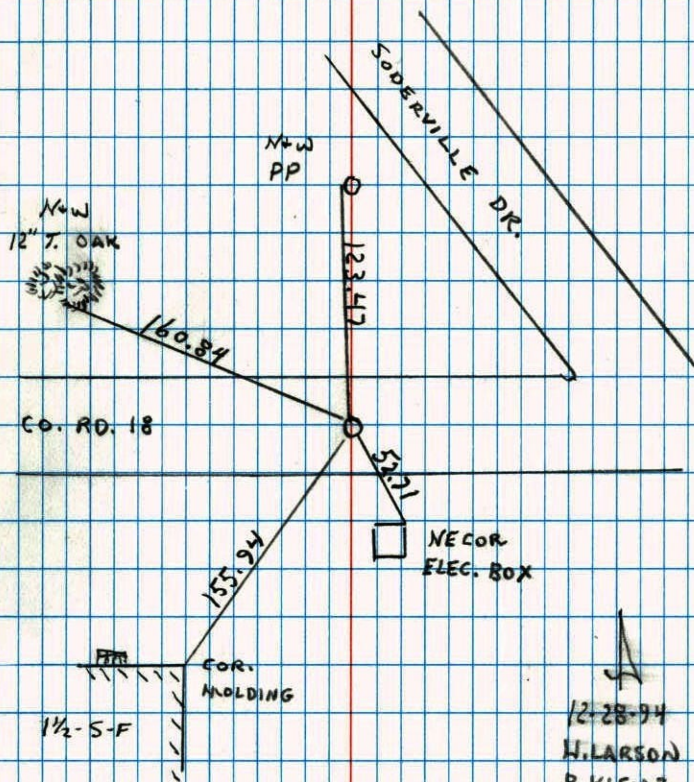
7-7-97  
 H. LARSON  
 J. SIMMER

NO. 446

NATIONAL PRINTFAST

N<sup>1</sup>/<sub>4</sub> CORNER SECTION 9 T32 R23

RETRIEVED EAST IRON MONUMENT



12-28-94  
 H. LARSON  
 B. KLEINZ  
 M. STEWART

NO. 446

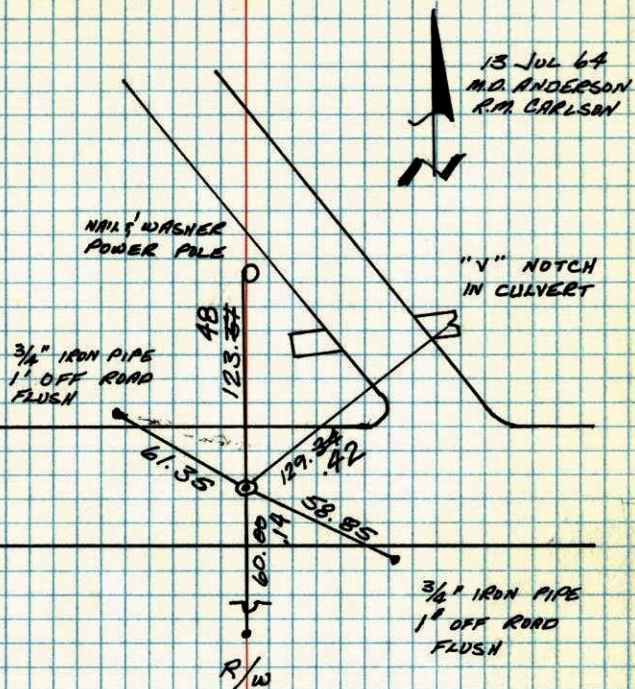
NATIONAL PRINTFAST



N  
8 1/4 CORNER SECTION A - T32 - R23

29

FOUND IRON PIPE. SET CAST IRON MONUMENT IN PLACE.  
P.K.'S 2.00' NORTH AND EAST.



RETIRO  
7-16-81  
P. ROSS  
P. HOENSBY  
G. NEFFINGER

TIE CHECK  
JUNE 25 1984  
D. ROSS  
R. BENNETT  
G. LIPS

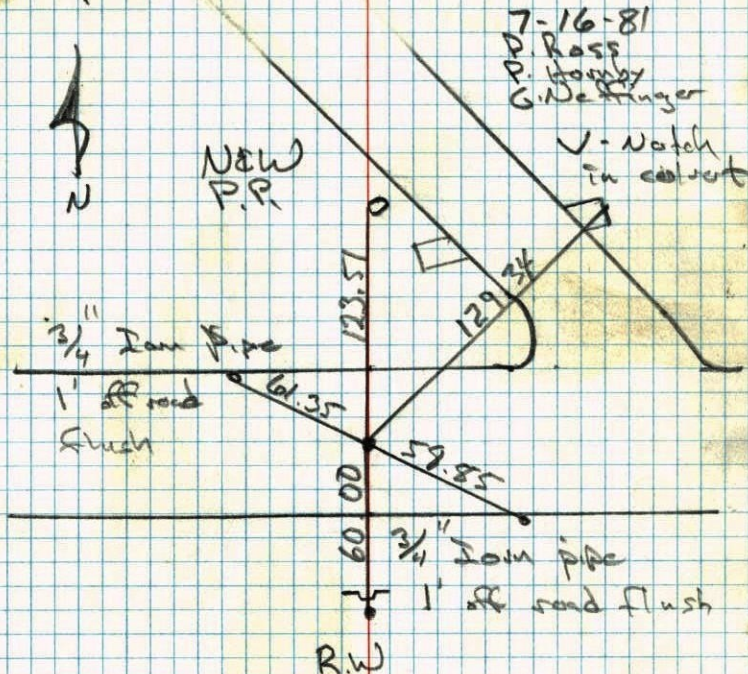
TEMPERATURE CORRECTED  
AND HORIZONTALLY  
TAPED MEASUREMENTS

ROLAND W. ANDERSON  
COUNTY SURVEYOR  
ANOKA COUNTY, MINNESOTA

N  
8 1/4 Cor. Sec. A - T32 - R23

29

Found Iron Pipe, Set C.I. in  
Place. P.K.'s 200' N+E



NO. 448

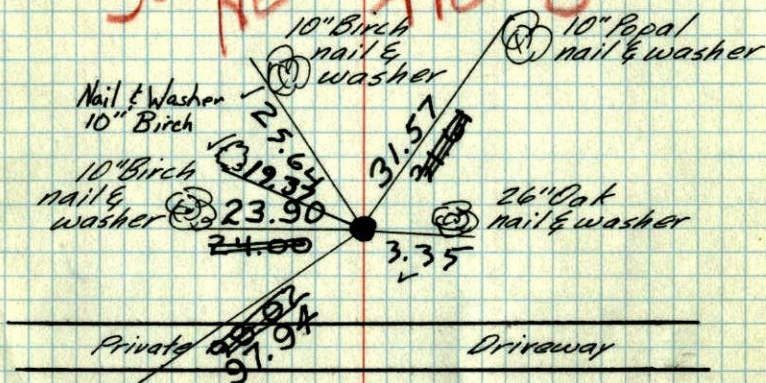
TELEPHONE



N 29  
 S 1/4 Cor. Sec. 4-T32-R23

Cast Iron Monument (not an Anoka County mon.) set by N.C. Heium  
 down 0.5'± Sign Post 1.00'± North & Warning Sign

SEE NEW TIE BOOK



P.P. nail & washer

Tie Check  
 July 19, 1966  
 B. Rogers  
 D. Powell  
 J. Berry

Tie Check  
 June 4, 1975  
 D. Dahl  
 B. Sannerud  
 G. Adams

July 13, 1969  
 M.D. Anderson  
 R.M. Carlson

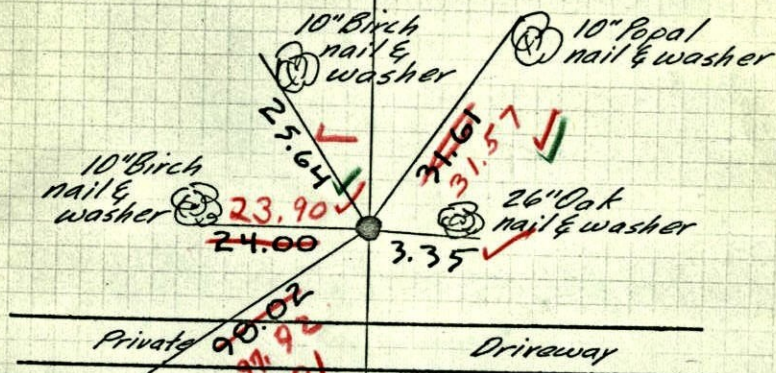
Tie Check  
 June 2, 1971  
 R. Brien  
 J. Boettcher

TEMPERATURE CORRECTED  
 AND HORIZONTALLY  
 TAPED MEASUREMENTS

ROLAND W. ANDERSON  
 COUNTY SURVEYOR  
 ANOKA COUNTY, MINNESOTA

N 20  
 S 1/4 Cor. Sec. 4-T32-R23

Cast Iron Monument (not an Anoka County mon.) set by N.C. Heium  
 down 0.5'±



P.P. nail & washer

Ties checked  
 7/19/66  
 B. Rogers  
 D. Powell  
 J. Berry  
 Tape 35  
 Temp 78

July 13, 1969  
 M.D. Anderson  
 R.M. Carlson

TEMPERATURE CORRECTED  
 AND HORIZONTALLY  
 TAPED MEASUREMENTS

ROLAND W. ANDERSON  
 COUNTY SURVEYOR  
 ANOKA COUNTY, MINNESOTA

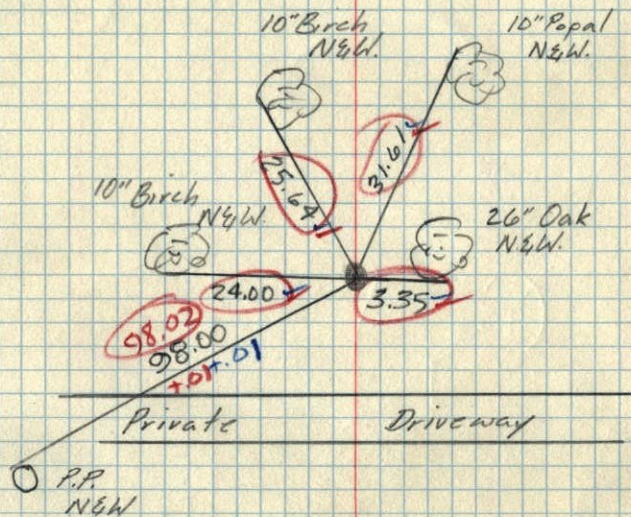


N 9

1/4 Cor. Sec. 7-T32-R23

Cast Iron Monument set by  
N. C. Hoium

Down 0.5'



July 13, 1964

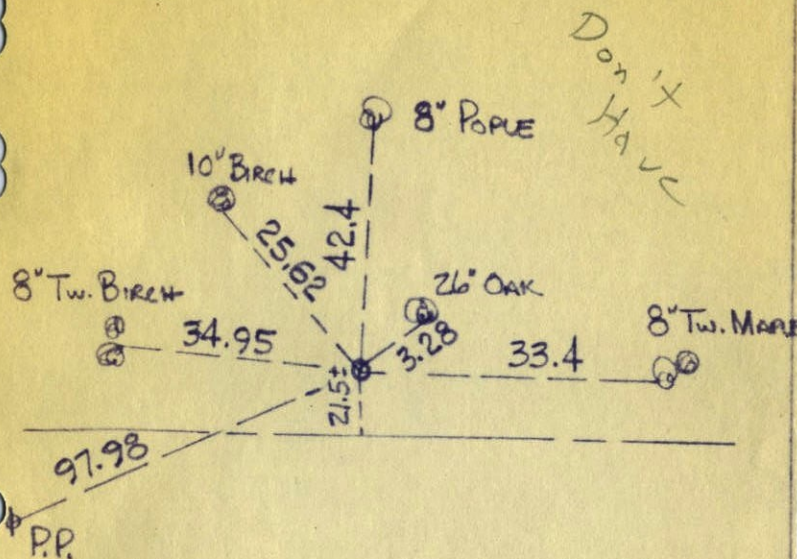
M. D. Anderson

R. Carlson

Temp. 85°  
Tape #1

N ~~1/4~~ <sup>1</sup> CORNER OF SECTION ~~9~~ <sup>204</sup> 9  
TOWNSHIP 32, RANGE 23

C.I. Down 0.5'



N. C. HOIUM  
AND ASSOCIATES, INC.  
LAND SURVEYORS

ANOKA, MINNESOTA